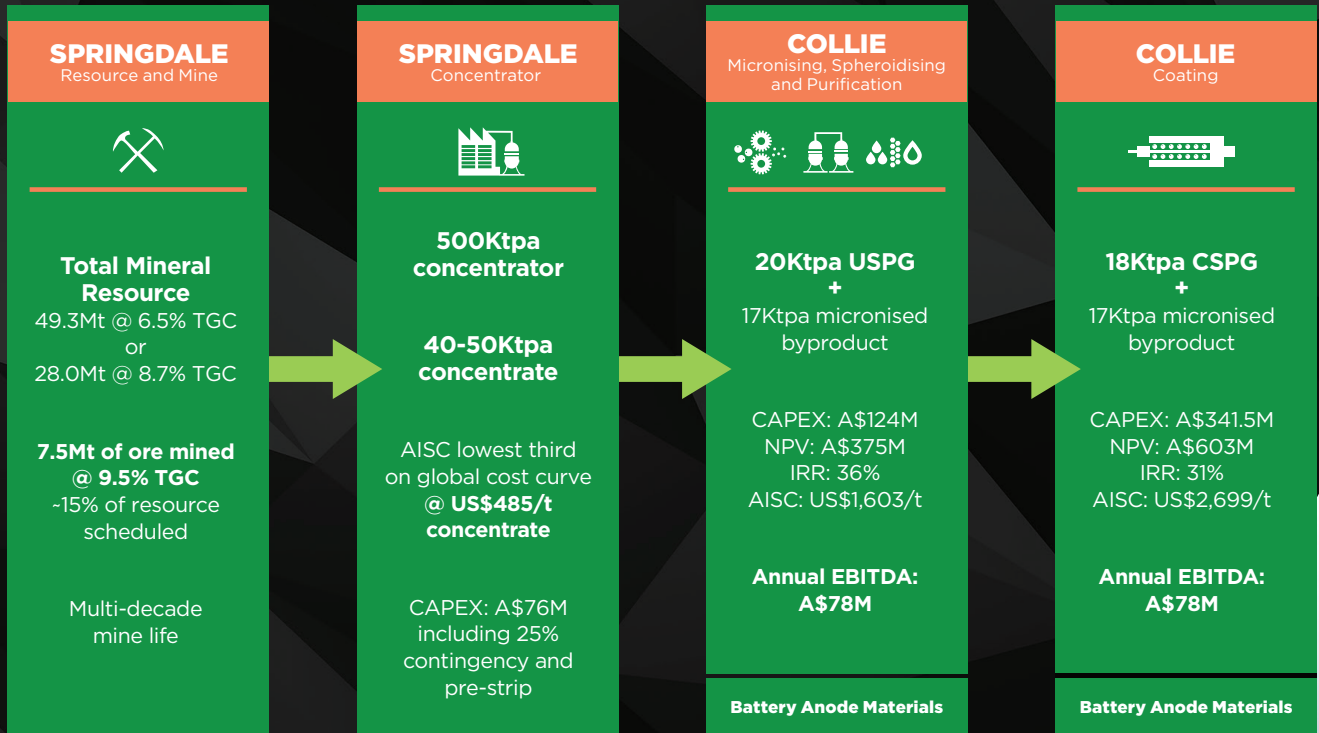


International Graphite is developing a mine to market supply of critical battery graphite in Western Australia.

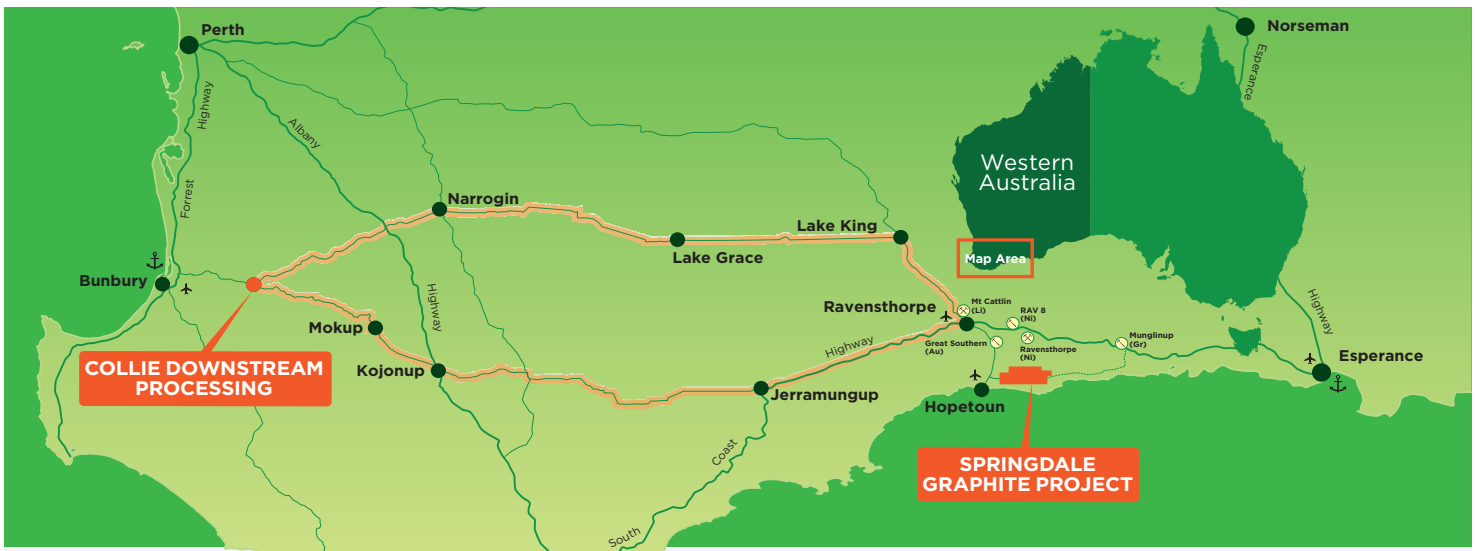


NEW SPRINGDALE-COLLIE INTEGRATED SCOPING STUDY
Released January 2024

FULLY INTEGRATED ASSETS OFFER A WORLD CLASS INVESTMENT OPPORTUNITY:

- Globally cost competitive
- Decades of operating life
- Compelling economics
- Huge scope for expansion
- Modular construction approach
- Western Australia - premier jurisdiction
- Targeting industrial, EV and battery growth markets
- THE professional team to execute





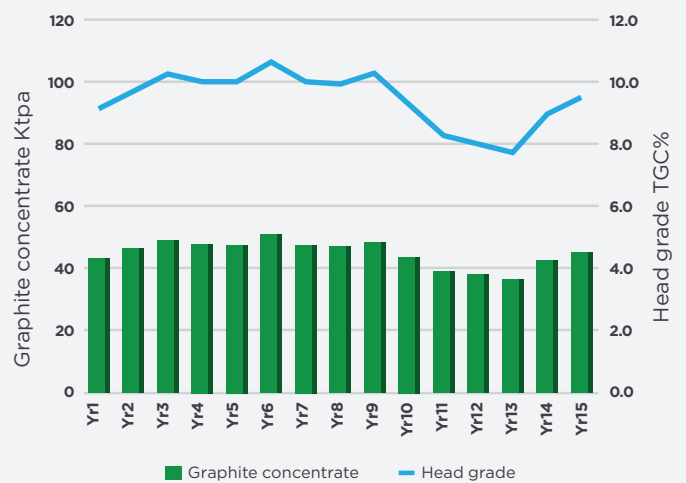
Springdale Mine & Concentrator

- World class development asset - 100% owned
- Discovery of the Year, Australian Mining Prospect Awards 2023
- Scoping study for long-life, open cut mine released January 2024
- Ongoing testwork confirms suitability for battery anode material (BAM)
- Feasibility Study for FID by late 2024

Mineral Resource

- MRE updated September 2023 – massive 240% increase
- Total Graphitic Carbon (TGC) to 49.3Mt @ 6.5% TGC @ 2% TGC cut-off
- Second largest known graphite deposit in Australia
- Four new discoveries from AEM identified targets
- Highly prospective with next drilling planned

PLANNED CONCENTRATE PRODUCTION



Collie Downstream Processing Hub

- R&D facility and pilot plant opened by the WA Premier in 2022
- New product qualification plant commissioned January 2024
- 200tpa microniser is a first in Australia
- Producing material samples for customer testing

Commercial Micronising

- 4,000tpa commercial micronising plant from 2024 (subject to funding)
- Innovative strategy to build markets, experience and cashflow
- Strong industrial demand for micronised product
- First stage in anode material for lithium-ion batteries

Battery Materials

- BAM production – 20,000tpa USPG / 18,000tpa CSPG
- Definitive Feasibility Study for FID by end 2024
- \$6.7M invested by Australian Governments



BOARD OF DIRECTORS (from left)
Matthew O’Kane Non-Executive Director
Phil Hearse Chairman
Dave Pass Non-Executive Director
Andrew Worland Managing Director and CEO



INTERNATIONAL GRAPHITE
www.internationalgraphite.com.au

Current February 2024, International Graphite Limited ACN 624 579 326 has prepared this material based on information available to it. No representation or warranty, express or implied, is made as to the fairness, accuracy, completeness or correctness of the information, opinions and conclusions contained in this presentation. To the maximum extent permitted by law, none of International Graphite, its directors, employees or agents, advisers, nor any other person accepts any liability, including, without limitation, any liability arising from fault or negligence on the part of any of them or any other person, for any loss arising from the use of this presentation or its contents or otherwise arising in connection with it. This presentation is not an offer, invitation, solicitation or other recommendation with respect to the subscription for, purchase or sale of any security, and neither this announcement nor anything in it shall form the basis of any contract or commitment whatsoever.