

AUSTRALIAN GRAPHITE

From Mine to Markets

Future Facing Commodities Conference
Singapore, March 2024



International Graphite is a graphite mining and processing company in Western Australia



Western Australia - the world's premium jurisdiction for critical battery materials

Corporate structure

International Graphite Limited (ASX:IG6)



ANDREW WORLAND
DIRECTOR
PHIL HEARSE
DIRECTOR
MATTHEW O'KANE
DIRECTOR



24%



RETAIL
55%

PHIL HEARSE
CHAIRMAN
ANDREW WORLAND
MANAGING DIRECTOR AND CEO
DAVID PASS
TECHNICAL DIRECTOR
MATTHEW O'KANE
NON EXECUTIVE DIRECTOR



166M SHARES ON ISSUE

Market Cap: \$30M @ 20/03/2024

THIRD PARTY AND SUBSEQUENTLY SPRINGDALE CONCENTRATES



COLLIE GRAPHITE PROCESSING
R&D / MICRONISING / SPHEROIDISING / PURIFICATION / MICRONISING QUALIFICATION

ESTABLISHED 2022 – 2024

COLLIE COMMERCIAL MICRONISING
INDUSTRIAL & BATTERY MARKETS

OPERATIONS 2025

MINE TO MARKETS



SPRINGDALE GRAPHITE PROJECT

CONSTRUCTION READY 2025, OPERATIONS 2026

COLLIE BAM FACILITIES
MICRONISING / SPHEROIDISING / PURIFICATION / COATING

* Director elect

Springdale Graphite Project

Developing Australia's second biggest graphite resource at Hopetoun, Western Australia



2023 Mining
AUSTRALIAN
MINING
PROSPECT
AWARDS

WINNER



Location and support infrastructure

Location and support infrastructure



Springdale Graphite Project

Development ready – cleared, easy access, support services

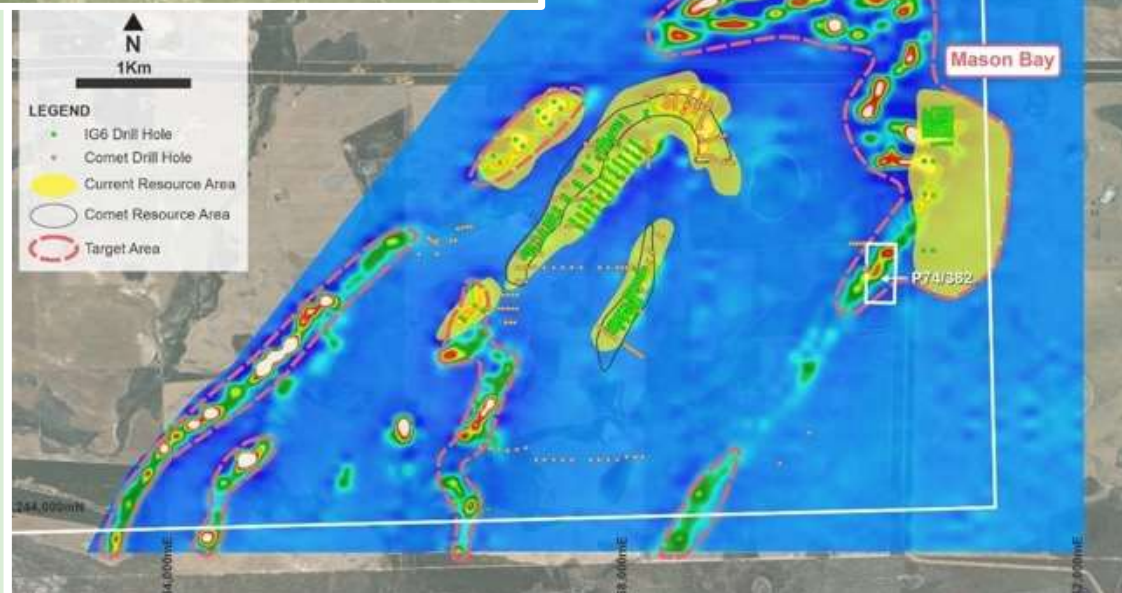
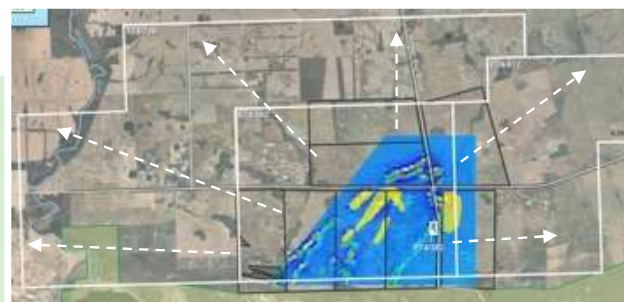


Springdale Graphite Project

JORC 2012 Mineral Resource Estimate

2% cut-off	Springdale Graphite Project September 2023		
	Tonnes (Mt)	Graphite (TGC%)	Contained Graphite (Mt)
Indicated	11.5	7.5	0.9
Inferred	37.8	6.1	2.3
Total	49.3	6.5	3.2

5% cut-off	Springdale Graphite Project September 2023		
	Tonnes (Mt)	Graphite (TGC%)	Contained Graphite (Mt)
Indicated	7.9	9.3	0.7
Inferred	20.1	8.5	1.7
Total	28.0	8.7	2.4



Springdale Graphite Project

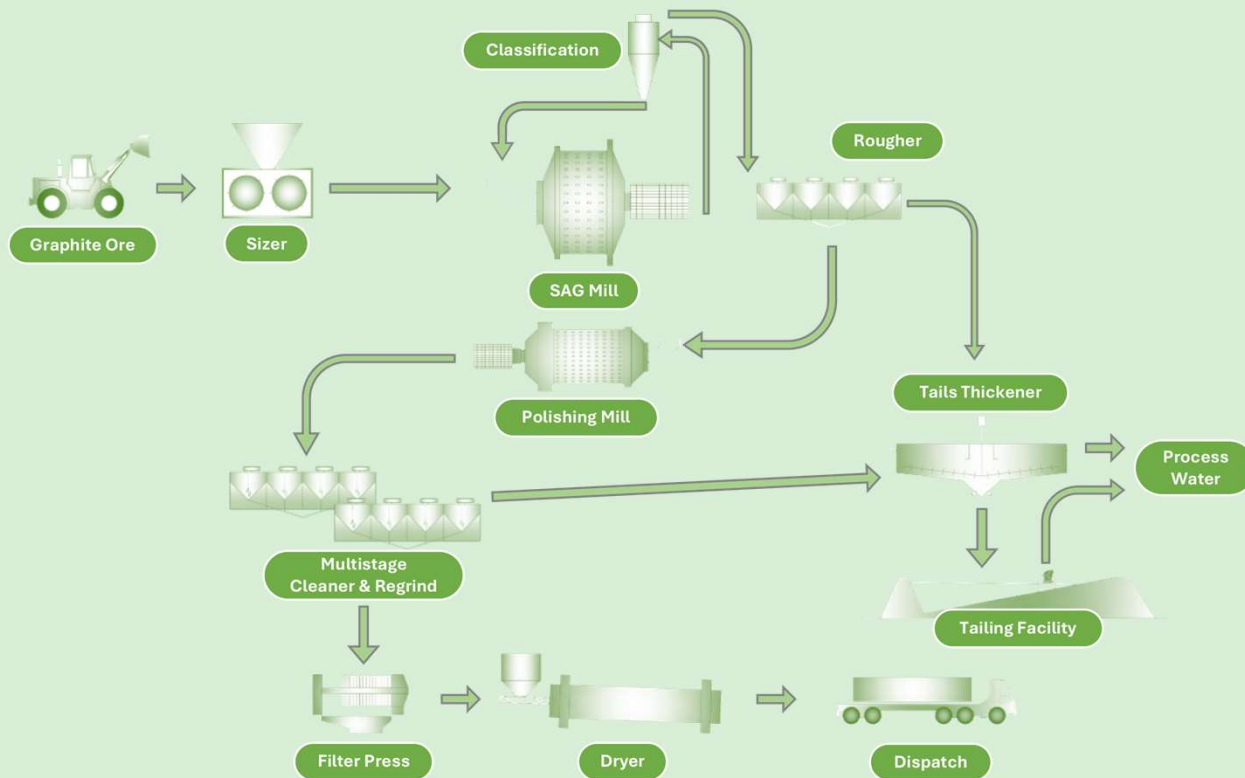
Mining – 500Ktpa ore for processing
Open pit conventional day shift operations

	Unit of measure	15 years of Operations
Indicated Mineral Resource mined and processed as a % of total Mineral Resource processed	%	72
Total tonnes mined	Mt	72.5
Ore mined (inc. low grade stockpiled)	Mt	10.1
Waste mined	Mt	43.1
Strip ratio	Waste: Ore	4.3
Total ore tonnes milled	Mt	7.5
Ore stockpiles available for processing	Mt	2.6



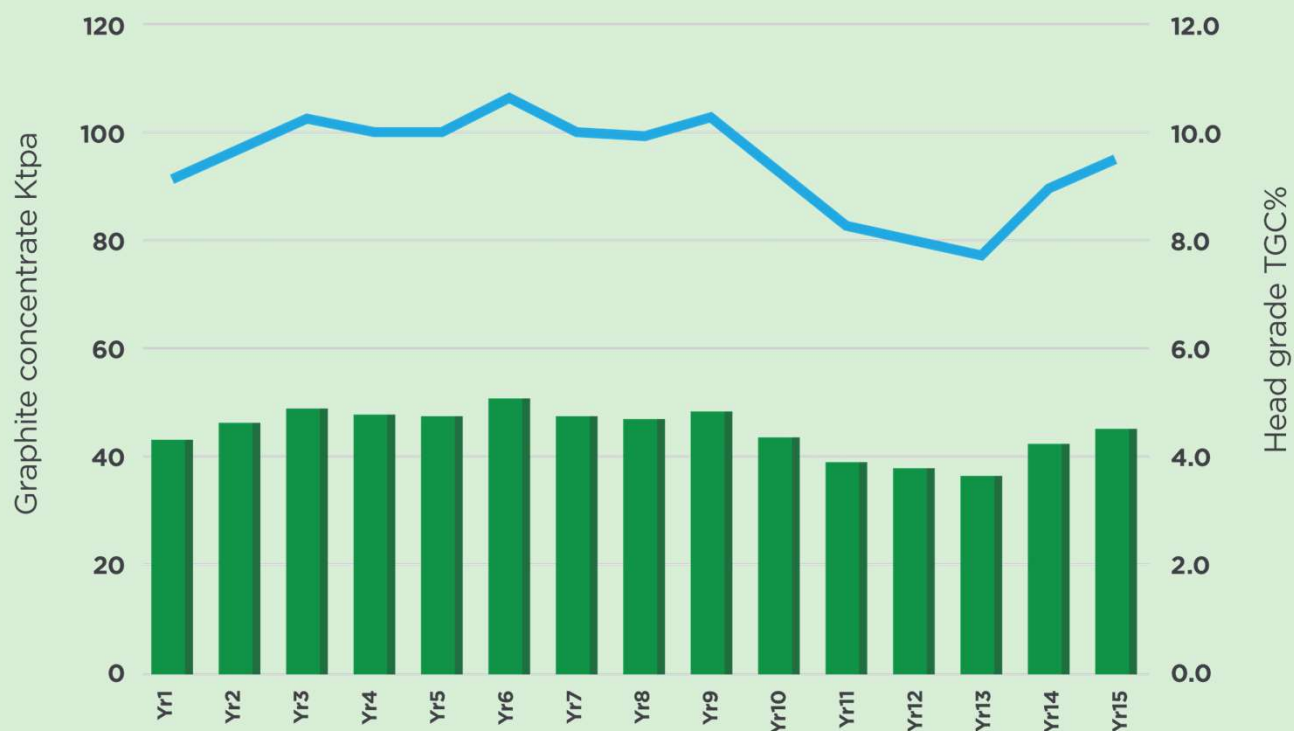
Springdale Graphite Project

500Ktpa concentrator



Springdale Graphite Project

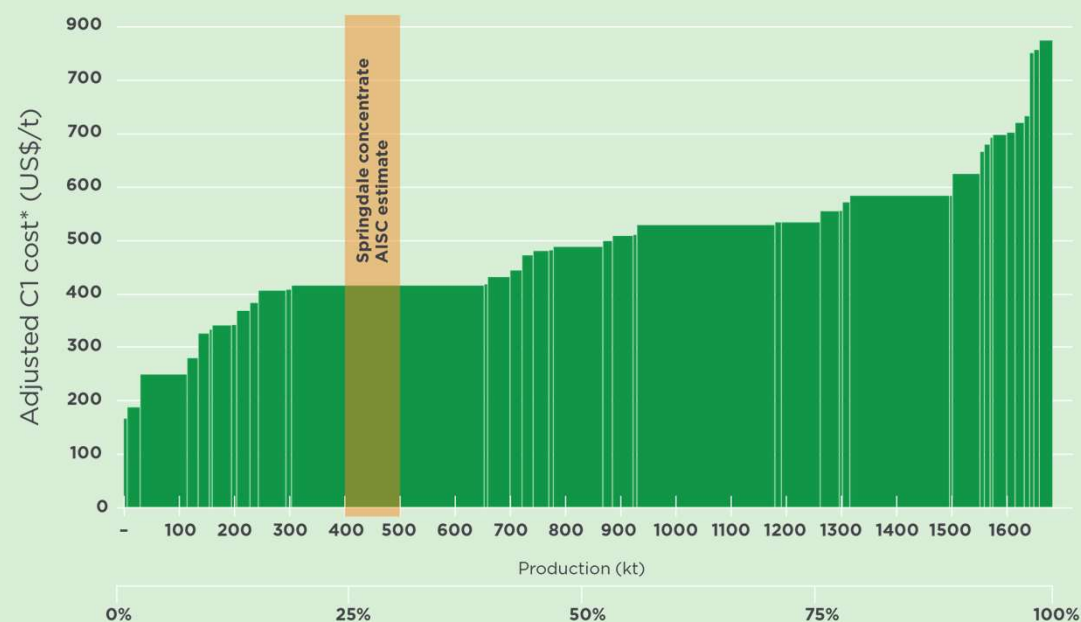
Production profile first 15 years



Springdale Graphite Project

Cost estimates

Capital Cost Breakdown	A\$M
Process plant and infrastructure	26.3
TSF	3.0
Site services, establishment and roads	2.4
Total Direct Costs	31.7
Engineering, procurement and construction management (EPCM)	7.9
Construction overhead	4.7
Spares	3.2
Owners' costs	3.5
Mine pre-strip	9.8
Total Indirect Costs	29.0
Contingency	15.1
Total	75.7

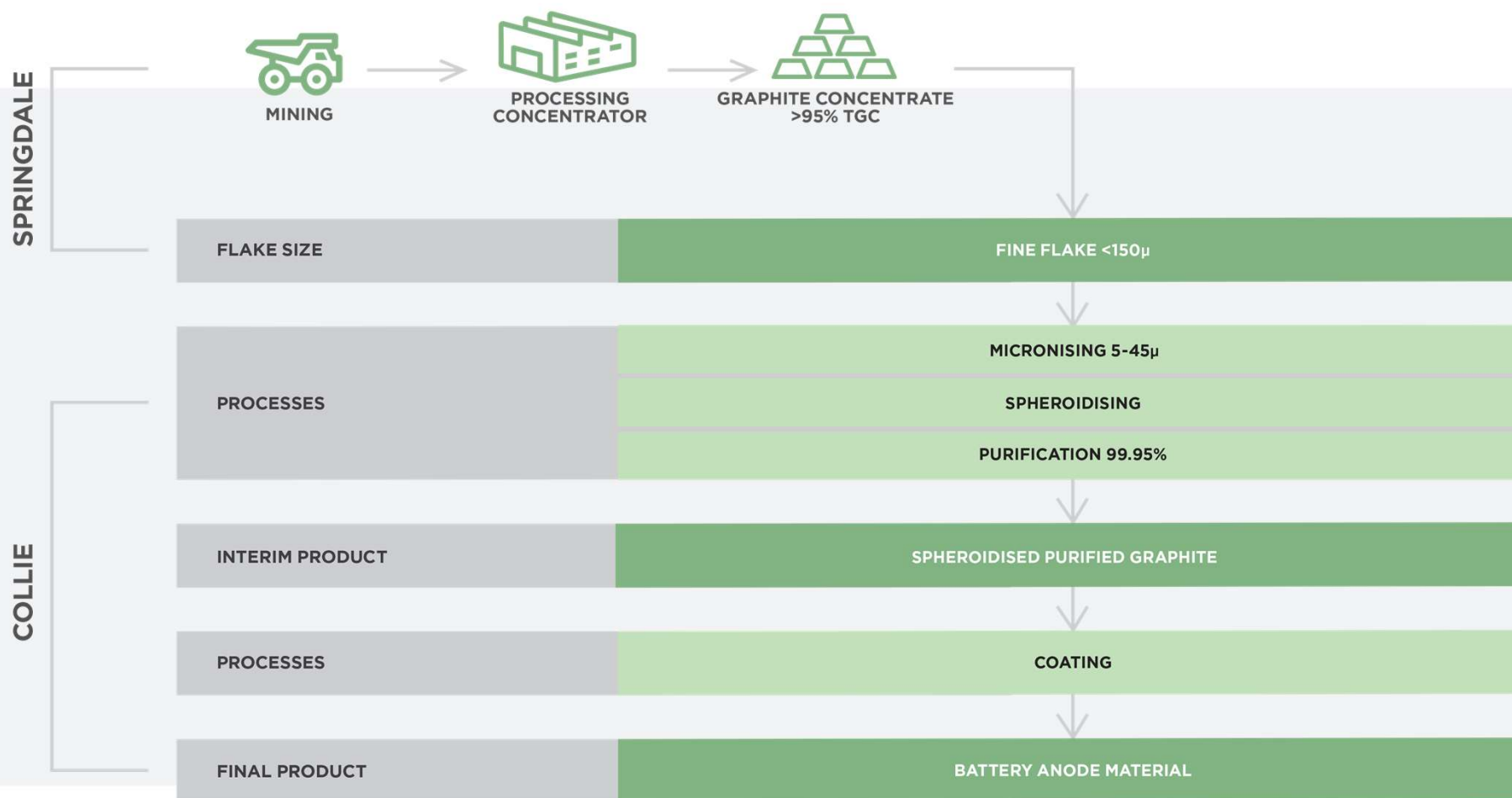


Collie Battery Anode Facilities

Developing a downstream processing hub at Collie to create Western Australia's first integrated mine to market producer of graphite battery anode material



Capturing full value of the graphite resource



Downstream Processing and Flowsheet R&D

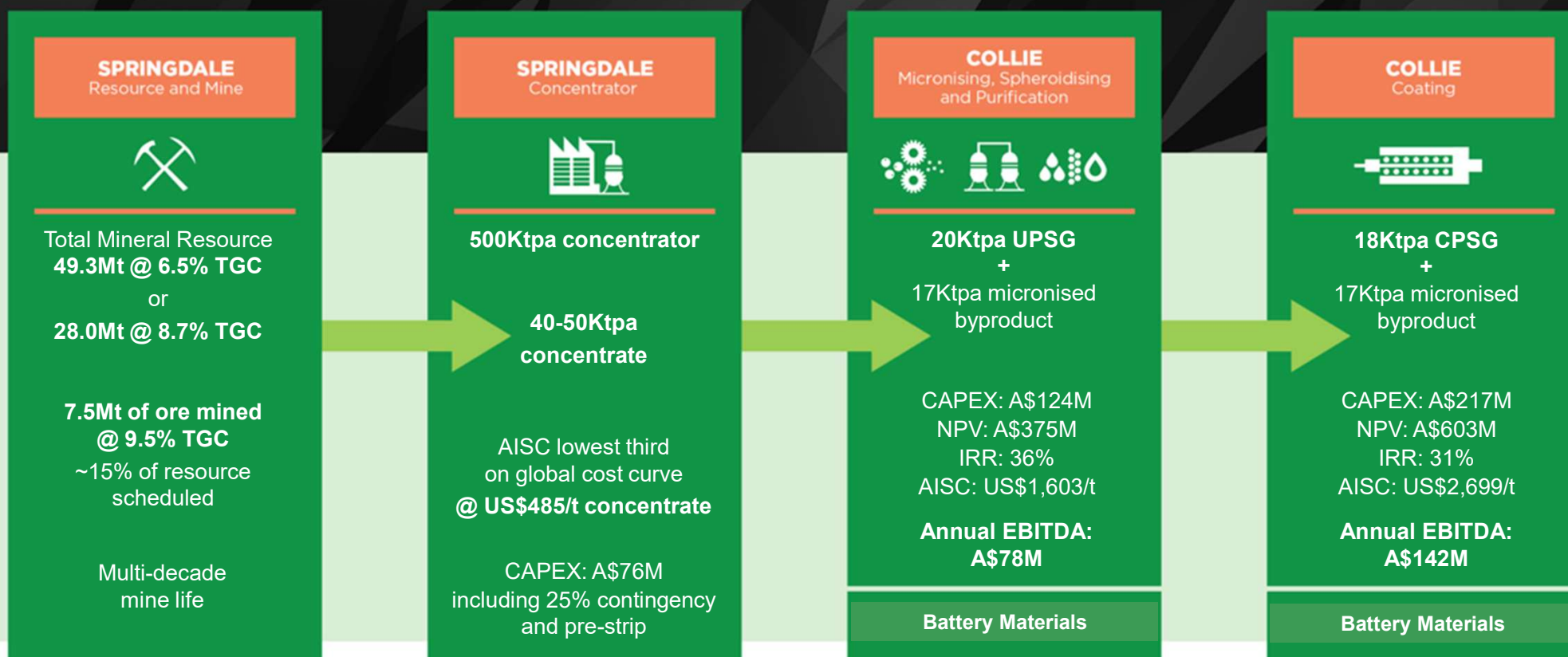
Pilot plant installed at Collie

- First pilot micronising and spheroidising equipment commissioned in 2022
- Thermal purification
- Samples produced using imported concentrates to tailor output to market specifications
- Sizing and distribution of spheroidised graphite achieved quality needed for battery anode and energy storage
- Purification to 99.96%+ using non-HF and electrochemical tests show exceptional battery charging and discharging capacity



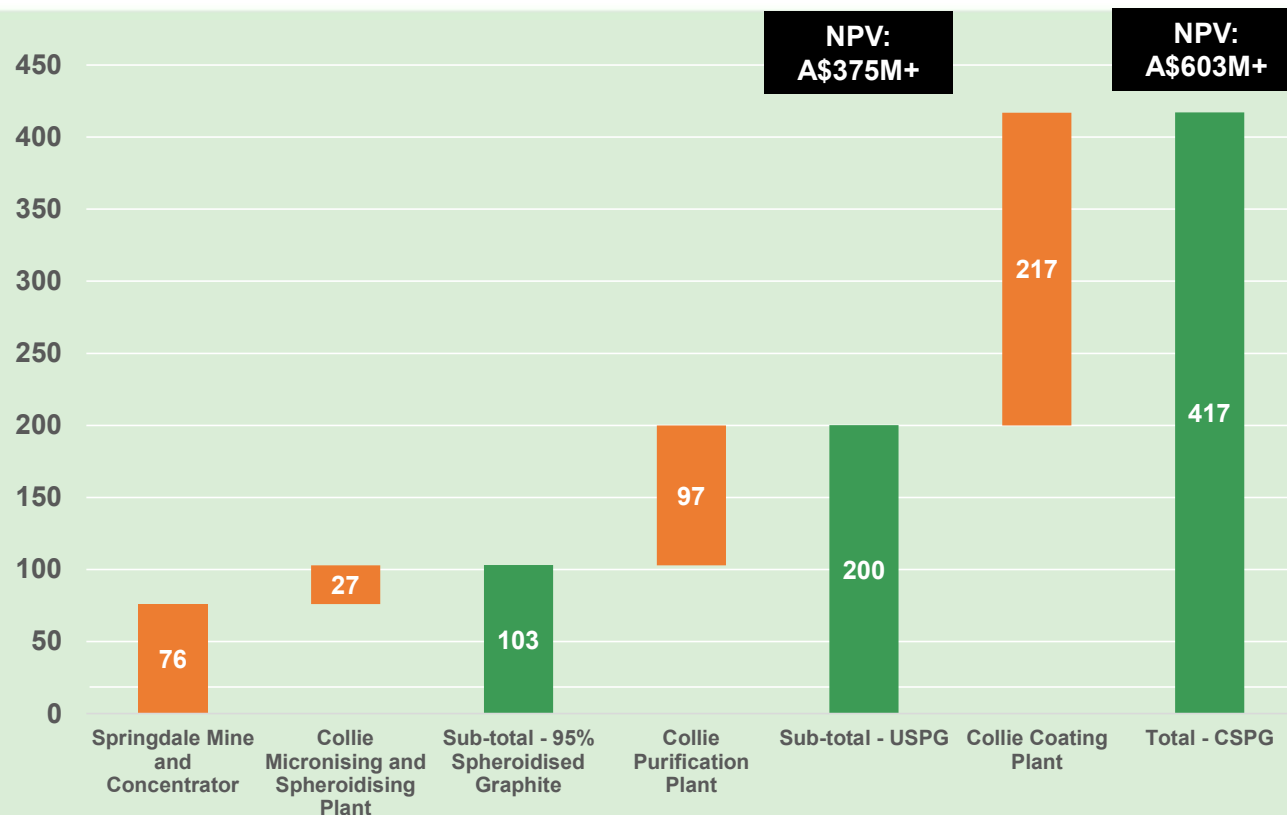
Integrated Mine to Markets Scoping Study

Key findings – first 15 years of operations



Total capital cost Estimate

A\$ Million



(1) NPV relates to years 1 – 15 of operations only

Collie Graphite Micronising Facility

Producing sample product for customer qualification and the first stage in processing battery anode material



Micronised graphite production at Collie

200tpa plant has been commissioned

- Now producing sample product for customer qualification and sales
- Sales agreements anticipated Q3 2024
- Long term industrial and battery graphite business
- Expansion to nominal ~4,000tpa at a capital cost of A\$12.5M
- Commencing with imported concentrates
- Then using Springdale concentrates
- Extensive markets for end product: battery/energy storage and industrial applications eg thermal management, lubricants, engineered products, polymers and battery cathodes



Micronised graphite products from Collie

Final Investment Decision Q3 2024 → production H2 2025

Definitive Feasibility Study – March 2023 Using imported concentrates	Unit of measure	
Total capital cost estimate	A\$M	12.5
Product markets: battery/energy storage and industrial uses	—	5-45um D90 95%-99%
Production	tonnes per annum	4,000
IRR approximately	%	53%
Average annual revenues approximately	A\$M	15.5
Average annual EBITDA approximately	A\$M	6.9
Market prices for product ranges	US\$/tonne of product	US\$1,750/t– US\$8,500/t



Government backing for battery minerals

IG6 backed by Australian Federal and State Governments

- \$4.7M awarded by the Australian Government national Critical Minerals Development Program – May 2023

- \$2.0M awarded by the Western Australian Government Collie Futures Industry Development Fund – September 2021

- \$200M Collie Industrial Transition Fund launched by the WA Government as part of a A\$662M Collie investment package – 25 November 2022

- Western Australian Industry Attraction Fund

- R&D tax rebates

- Australian Export Finance Agency – proven debt financiers of sovereign graphite developers



Highlights

- *Micronised graphite producer at Collie from 2025*
- *Developing a world class multi-decade graphite mine at Springdale*
- *Developing battery anode facilities to treat Springdale concentrates in Collie*
- *Premium location in Western Australia*
- *Strong government and community support*
- *Global growth markets*
- *Long life operations and outstanding economics*



International Graphite Limited

Phil Hearse

Chairman

+61 438 838 600

phearse@IG6.com.au

Andrew Worland

Managing Director & CEO

+61 409 370 792

aworland@ig6.com.au



INTERNATIONAL
GRAPHITE

(ASX:IG6)

AUSTRALIAN BATTERY GRAPHITE
FROM MINE TO MARKET
(ASX:IG6)